

ENSOFT, INC.



**ENSOFT SOFTWARE
INSTALLATION NOTES
FOR SINGLE-USER LICENSES**



ENSOFT SOFTWARE INSTALLATION NOTES

We appreciate your purchase of our software. ENSOFT, INC. has been producing commercial engineering software since 1985. Our decades of experience allow us to provide unmatched quality on our products. Your investment is backed by expert engineers in deep foundations and numerical modeling, providing excellent service and technical support.

ENSOFT SOFTWARE INSTALLATION NOTES

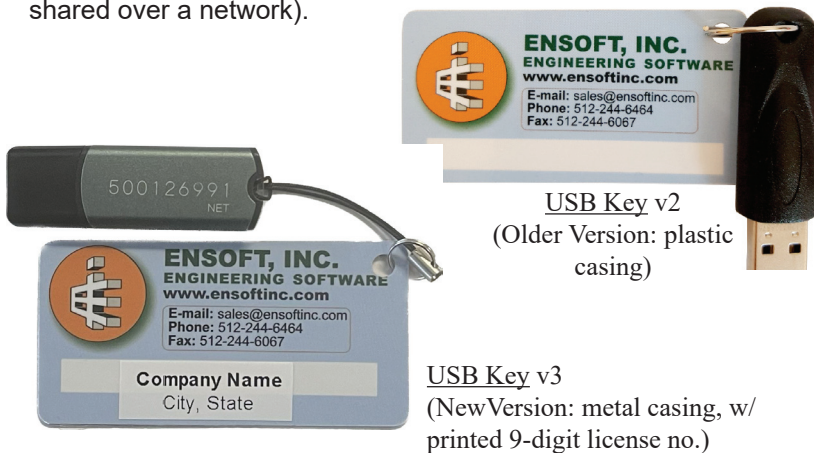
Package Contents

The following items are shipped with our products:

1. **USB Memory Stick** – with silver (or white) flip casing is a standard memory stick containing installation programs for all Ensoft Software that were available at the time of shipment. Manuals are installed with each software in electronic form using protected PDF files. The **USB Memory Sticks** may be discarded or formatted blank for other uses. Latest updates of all Ensoft Software are always available at www.ensoftinc.com/downloads



2. **USB Key** – this is a black colored USB-based hardware security key (dongle), with a plastic tag indicating its unique serial number, licensed site (office name and location) and name of licensed software. Each **USB Key** is programmed with the purchased Ensoft Software. The **USB Key** for a single-user license can be used on any computer when plugged directly into a working USB port of the computer in use (it cannot be shared over a network).



USB Key v2
(Older Version: plastic casing)

USB Key v3
(New Version: metal casing, w/
printed 9-digit license no.)

ENSOFT SOFTWARE INSTALLATION NOTES

Installation of Single-User Version

The latest Ensoft Software releases are compatible with the following versions of the Microsoft Windows® operating systems: 11, 10, 8.1, 8, 7 Vista, XP and 2000.

The following guidelines are recommended for the installation of single-user licenses.

1. Plug the USB Key into a working USB port (or USB hub) in your computer. The USB Key is plug-and-play compatible so the operating system will recognize it automatically and a small solid green light should be visible at the end of the USB Key (a flickering green light or no light indicate problems with the standard windows driver or with the USB Key).
2. Plug the USB Memory Stick (black colored with silver or white flip casing) into another USB port (or USB hub) in your computer. The USB Memory Stick is also plug-and-play compatible so the operating system will recognize the device contents after a brief lapse while assigning the proper device driver.

If Windows Explorer is not coming up automatically to display the file contents on the USB Memory Stick, click on the Windows **Start Menu** button and select **Run** (or simply click on the **Start Icon**). On the command line, type *d:\setup.exe* or *e:\setup.exe*, where *d:* or *e:* represents the drive that contains the USB Memory Stick. Click **OK** to execute the command and start the main installation program. A screen similar to the one in Figure 1 should appear.

Select the Ensoft Software you wish to install and then click on the **Install Standard** button to start the installation of SOFTWARE (Figure 1).

Alternatively to this step, the user may simply download the purchased Ensoft Software from our website using the following link:

<https://www.ensoftinc.com/downloads>

3. The user should read the **License Agreement** shown in Figure 2. Please click **Yes** if you agree and would like to proceed with the **Next** button.
4. Select **Single-User License** in Figure 3 and click **Next**. For network installations please contact Ensoft support (support@ensoftinc.com).

ENSOFT SOFTWARE INSTALLATION NOTES

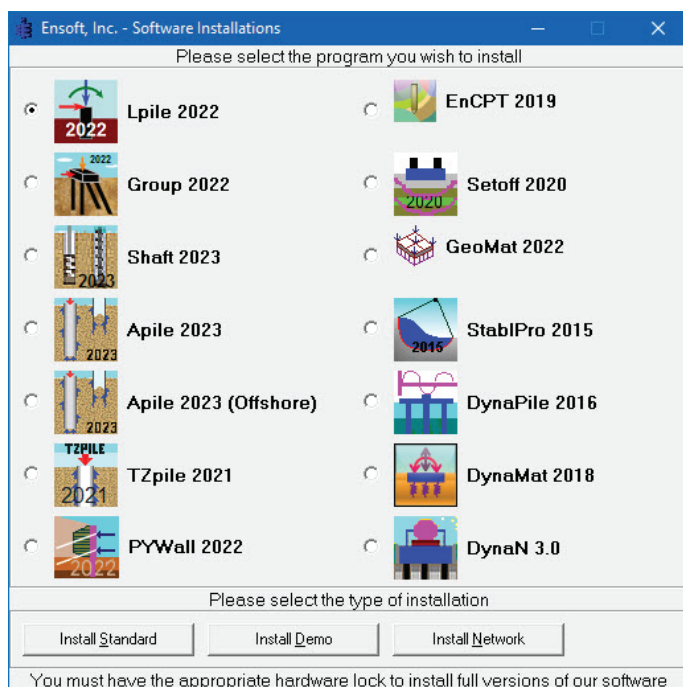


Figure 1 Main installation screen for ENSOFT software

5. The installation directory for the example files can be selected or confirmed by the user (Figure 4). By default the example files are copied to the following subdirectory:

(Root Drive)\Ensoft\SOFTWARE-Examples

A different directory can be selected with the Browse button or by entering the directory name in Figure 4.

6. The user will be provided with an option to select a drive and directory for the installation of the Ensoft Software (see Figure 5). Default installation directory (varies according to the Windows release where it is installed) is one of the following:

(Root Drive):\Program Files (x86)\Ensoft\SOFTWARE

(Root Drive):\Program Files\Ensoft\SOFTWARE

If the desired directory does not exist, the installation program will automatically create a new directory in the chosen drive.

ENSOFT SOFTWARE INSTALLATION NOTES

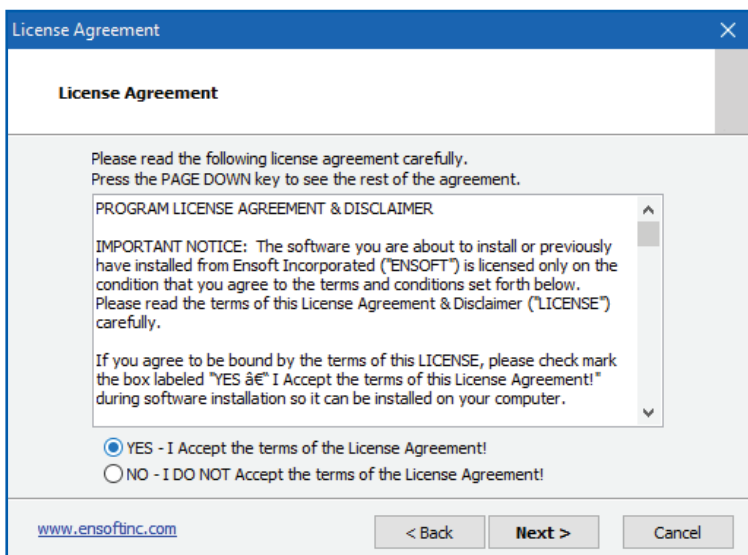


Figure 2 Installation screen with License Agreement

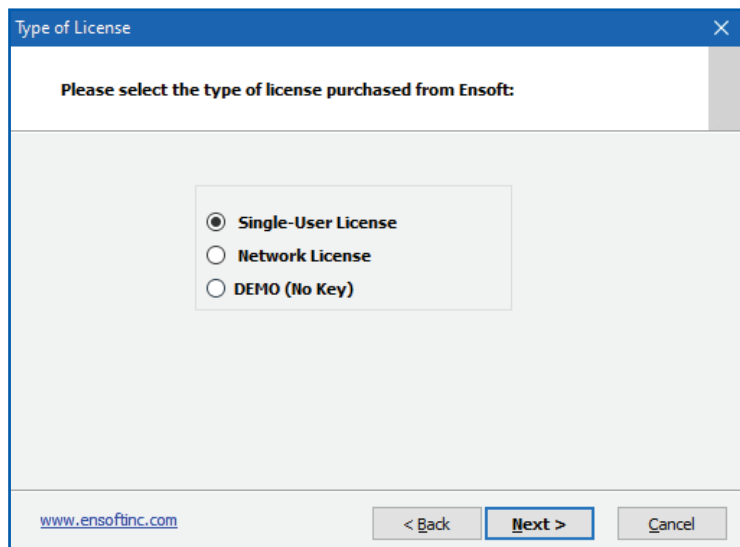


Figure 3 Selection of Single-User License

ENSOFT SOFTWARE INSTALLATION NOTES

Most distribution files will be copied to the installation directory (either the default or the one selected by the user). However, certain files are copied to system directories in Windows and some Windows services are started during installation (mainly for Network installations). The name of the system files, their exact locations, and the type of services that are started may change in time and for different versions of the Microsoft Windows® operating system.

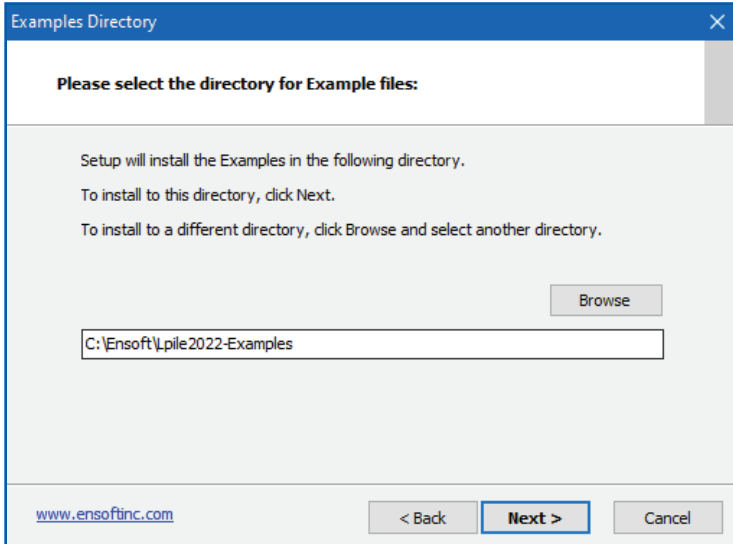


Figure 4 Default Installation Directory for Examples

7. During installation the user will be asked to set the file extension association for the input data files (see Figure 6). If the user agrees (leaves the default check mark) then double clicking (or running any input data file with extensions of the type will start the installed Ensoft Software.
8. The user will be prompted to confirm the shortcut directory name that will be created in the *Windows Start Menu* (see Figure 7). The common default shortcut of Ensoft products is *StartMenu > Programs > Ensoft > SOFTWARE*
Windows 11, 10, 8.1 and 8 will automatically create an Ensoft tile with the same shortcuts.
9. At the end of installation (Figure 8) the user will be able to launch the SOFTWARE with placement of a check mark in the

ENSOFT SOFTWARE INSTALLATION NOTES

screen (make sure to have the USB Key plugged to a port on the computer in use).

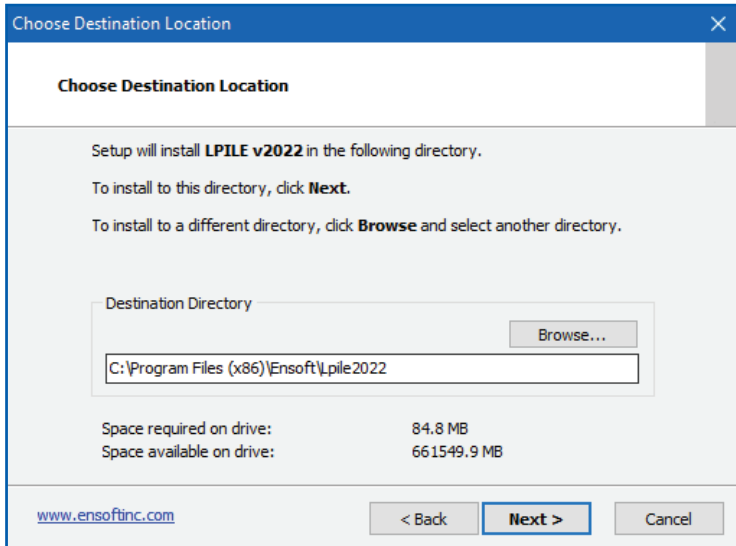


Figure 5 Default Installation Directory for SOFTWARE

Running the SOFTWARE

After a complete installation, it is not necessary to reboot the Microsoft Windows® operating system to run the Ensoft Software. The user may run the program by selecting the Ensoft Software from the standard links installed in the Microsoft Windows® Start Menu:

Start Menu > All Programs > Ensoft > SOFTWARE

SOFTWARE Updates

New releases of the Ensoft Software products are made regularly. Users can select **Help > Check for Updates** on any Ensoft Software to verify the version they are running and compare to the one available on our web site (www.ensoftinc.com).

ENSOFT SOFTWARE INSTALLATION NOTES

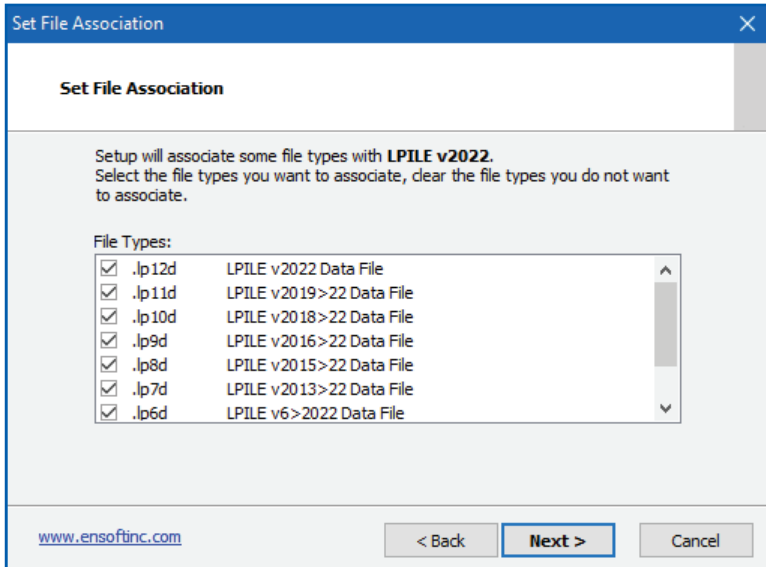


Figure 6 File Extension Association for SOFTWARE Data Files

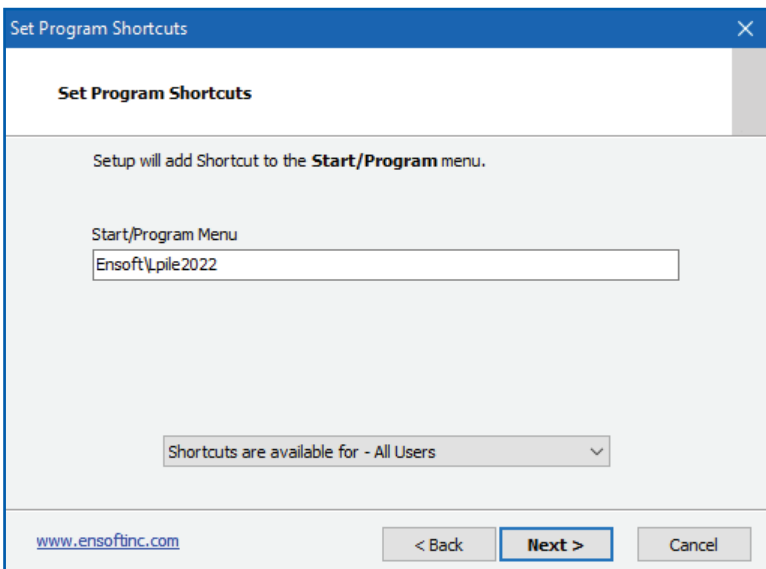


Figure 7 Default Shortcut Folder in Windows Start Menu

ENSOFT SOFTWARE INSTALLATION NOTES

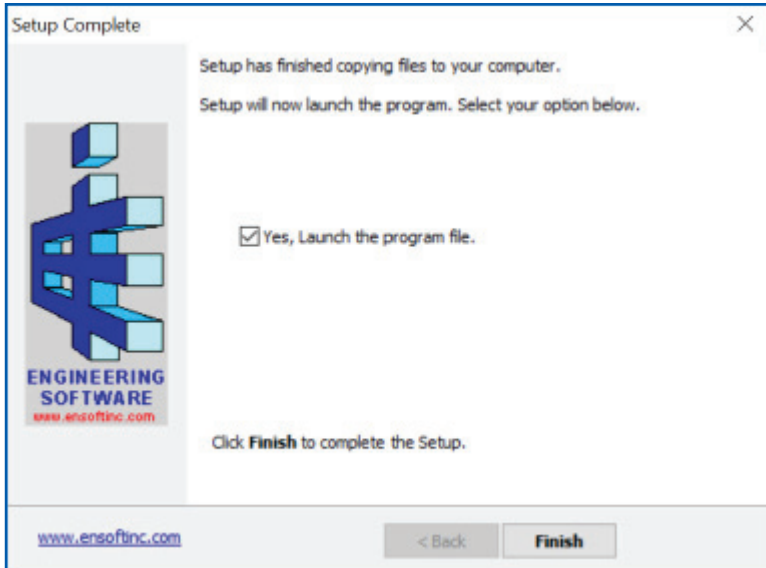


Figure 8 End of SOFTWARE installation



ENSOFT, INC.

ENGINEERING
SOFTWARE

CUSTOM TESTING
& MONITORING

CONSULTING
SERVICES

3003 WEST HOWARD LN
AUSTIN, TEXAS 78728
UNITED STATES OF AMERICA

512-244-6464
sales@ensoftinc.com

www.ensoftinc.com

